

Fuellox Heavy Duty Universal

Heavy Duty FuelManagement



1300 557 356
sales@fuellox.com.au



I. Fuellox HDU

Heavy Duty Fuel Management

Fuellox HDU is built for the toughest operating environments – service trucks, remote sites, and heavy-duty applications where standard enclosures won't cut it.

It handles any power supply and controls any pump or solenoid type. All managed through the Fuellox smartphone app – available on iOS and Android.

No SIM cards. No FOBs. Built tough. Ready for the field.

II. Features & Capabilities

Capabilities

- Setup and calibrate via the Fuellox mobile app
- No SIM cards or FOBs required
- Firmware updated over the air for long-term support
- Optional interface for level, E-stop, bypass, and nozzle switch

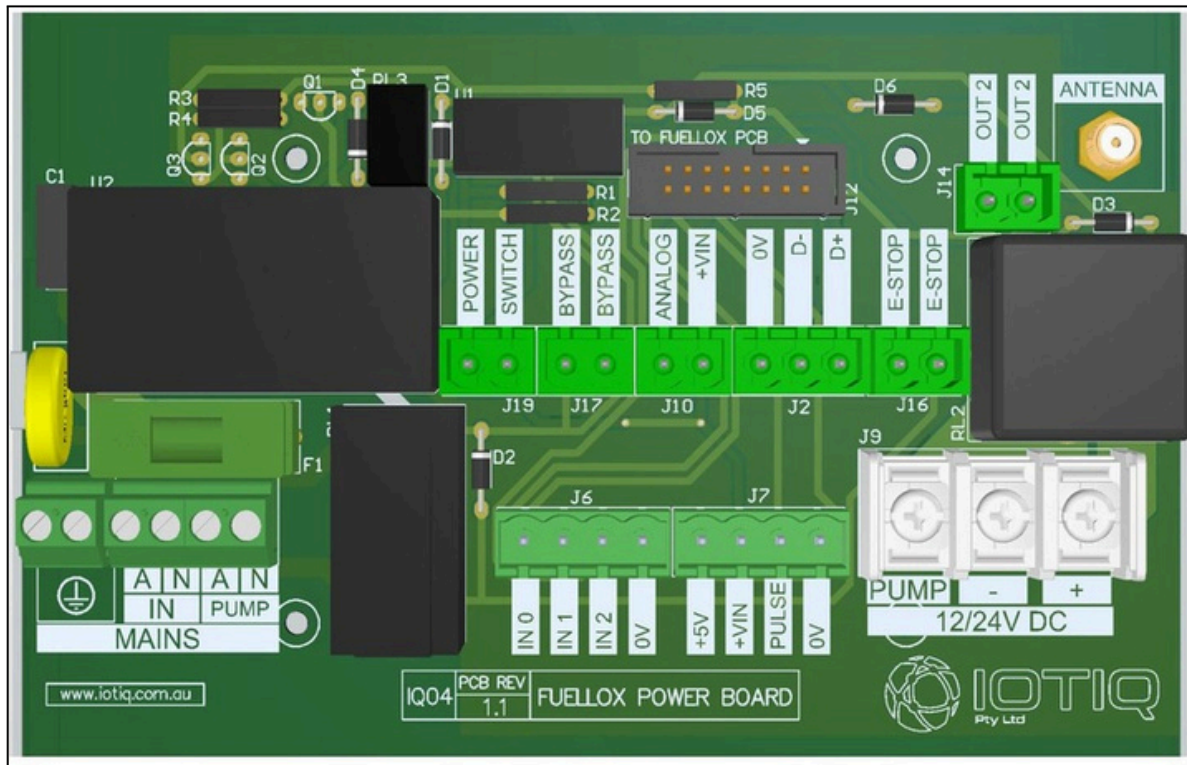
Compatibility

- Runs on 12V/24V DC or 110V/240V AC
- Suits all 2-wire reed and 3-wire Hall Effect pulse meters
- Switches any electrical, pneumatic, or hydraulic pump – extensive wiring catalogue available on request
- Recommended for use with Fuellox High Gain BLE Antenna

Key features		
Cost Effective	Simple installation	Multi-site scalable
Touch - Free	Suits service trucks	No SIM cards
Easy to update	App-based setup	No FOBs
Heavy Duty	Dual pulse meter support	Reliable
No Moving Parts	Programmable Interface	Universal Power



FuelloxDHU



Main PowerBoard

III. Ordering Variants – Fuellox HD

Feature	Options	Code
Bypass	Surface Mount [Note 1]	B1 B0
	External	B0 L1
	Not Required	L0 -
Level	Installed	ED EL
	Not Required	- M0
Enclosure Size	300x300x150 - Standard	- IPS
	300x300x200 - Deep	
	400x400x200 - Large	
Mains Switch	Installed	
	Not Required	
Emergency Stop	Standard surface mount	
	Illuminated Process Stop	

Note: Surface mount bypass is not available with solenoid control. Where solenoid control is required, bypass must be external mechanical.

Examples

Example 1 – Typical ordering for a standard unit, to run on a 240V AC pump from mains power.

Power	Control	Bypass	Level
Universal	--	Surface Mount	Required
EcoPLUS	FLX-HDU-B1-L1	B1	L1
Order Code:			

Example 2 – For a service truck with an air or pneumatic powered pump.

Power	Control	Bypass	Level
24V	24V Solenoid	External	Not Required
EcoPLUS	S24	B0	L0
Order Code:	FLX-HDU-B0-L0		

IV. Specification

Item	Spec
Enclosure	30cm x 30cm x 15cm. Optional: 30cm x 30cm x 15cm 40cm x 40cm x 20cm
Weight	< 10 kg total mass
Material	Powder Coated Steel
Mounting	Surface Mount - Rear Hole Mount Optional Mounting Accessory.
Terminals	Internal DIN Rail
Power	12 or 24V DC. 110 or 240V AC.
Frequency MHz	2.4 GHz
Approvals	AS/NZS CISPR 32:2015 + AS/NZS 4268:2017
BLE	Recommended External Antenna sold separately
Inputs	Up to 4 programmable inputs onboard
Nozzle Switch	Optional. Suits all standard nozzle switches Option to replace with Pump On switch Optional. Normally open E Stop
E Stop NO	Optional. Normally Closed E Stop
E Stop NC	Included. Onboard override via keyed bypass or other
Override	Recommend External Bypass for critical refuelling applications Pump shut off on low level switch.
Pump Shut off	2 wire reed switching pulse meters
Pulse Meter compatibility	3 wire hall effect pulse meters 2x Surface Mount relay, IM switching events.
Switching	Driver for: Direct low current pumps, Contactor, High Current Relay, Solenoids etc AS/NZS CISPR 32:2015 + AS/NZS 4268:2017
Certifications	-10°C to 60°C
Operating Conditions	12 Months from delivery
Warranty	Extended warranty options available. See Fuellox Care See installation directions docs.fuellox.com.au
Installation	Call to discuss your requirements
Other Configurations	

V. Applications



FuelloxD HD (V1) – Colas Crew Truck



FuelloxD HD V2 – Earthworx Service Truck

Trusted By Operators Worldwide

